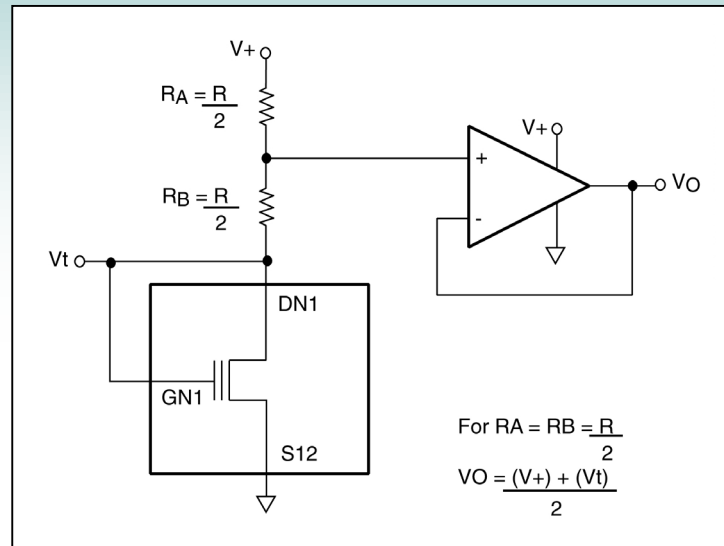




Select V_o by Using EPAD[®] Transistor and Resistor Ratios



Description

This circuit shows an EPAD MOSFET and resistor network with an output that can be scaled to any desired voltage V_o . By careful selection of the EPAD MOSFET and resistor values as well as resistor characteristics, it is possible to have an output designed to provide a specific value and have a set of specific characteristics, such as linear or non-linear temperature dependence.

Recommended Components

$\frac{1}{4}$ ALD1108E, $\frac{1}{2}$ ALD110908, or any of the EPAD MOSFETs
 ALD1712, ALD1721, ALD1722, ALD1726

Other Related Circuit Ideas

Schematic no. fet_11111.0 Amplify and Shift EPAD MOSFET Output with an Operational Amplifier