

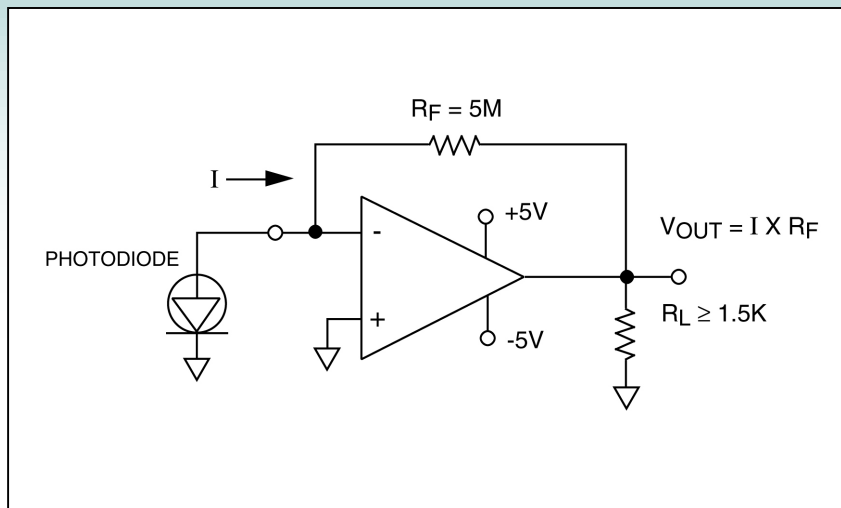


Category: Current to Voltage Converters

CIRCUIT IDEAS FOR DESIGNERS

Schematic no. iv_17003.0

Current to Voltage Converter



Description

This current to voltage converter rely on the very high input impedance of the operational amplifier. The input current (I) is forced through feedback resistor (R_F), and generates an output voltage equal to (-I x R_F). This output voltage is valid for output voltages from rail to rail, namely, from -5.0V to +5.0V in this example.

Recommended Components

ALD1701, (½ ALD2701 or ¼ ALD4701), ALD1702, (½ ALD2702 or ¼ ALD4702)
ALD1704, (½ ALD2704 or ¼ ALD4704), ALD1706, (½ ALD2706 or ¼ ALD4706)

Other Related Circuit Ideas

©2005 Advanced Linear Devices, Inc. Information furnished by Advanced Linear Devices, Inc. (ALD) is believed to be accurate and reliable. However, ALD assumes no responsibility for the use of such information nor for any infringement of patent or rights of third parties that may result from its use. No license is granted implication or otherwise under any patent rights of ALD.